

NOTES:

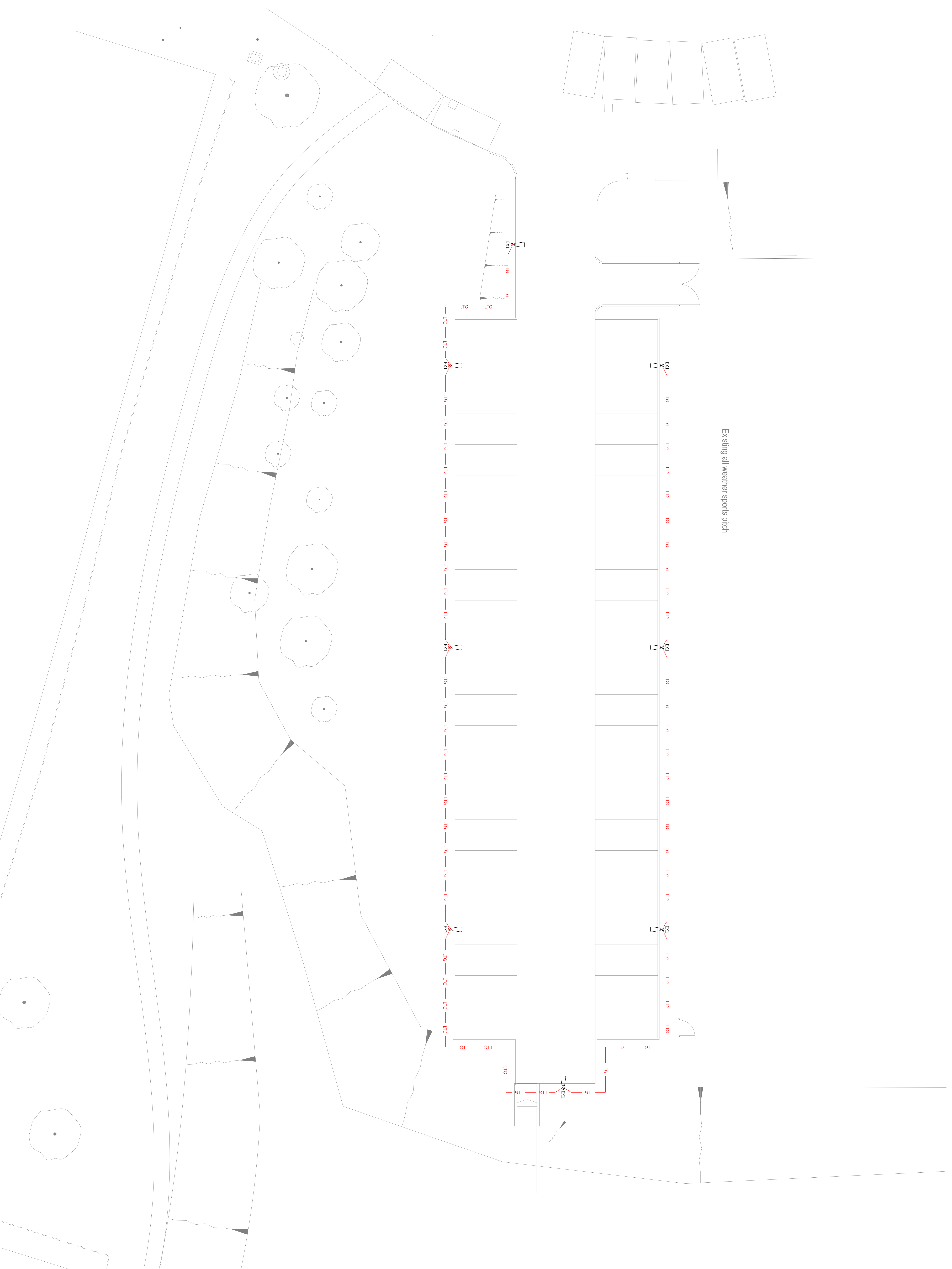
1. Do not scale from the drawing, all dimensions are nominal and must be checked on site.
2. Take read in conjunction with architect and engineering drawings, specifications and schedules.
3. Any dimension notes should be brought to the attention of the architect, if in doubt ask.
4. For dimensions setting out and erection details refer to architect drawings.
5. These drawings are copyright of Halden MEP Ltd, please do not reproduce or use in any form without the permission of Halden MEP Ltd. All rights reserved.

PARTICULAR NOTES:

- Car Park lighting columns to be 4m, base-hinged variant for maintenance.
- Post top luminaires to be Thom Cavc LED type, (866mm, 28W) complete with extra wide street & corner optic.
- Car Park lighting to be controlled via central protocol, complete with time switch override.

BASED ON ARCHITECTS DRAWING:

4737 N68A.00XX.09A.I015.S1



A PRELIMINARY SITE  
DATE: 01/7/24  
DRAWN BY: DMR

PROJECT:  
HAILSAHM COMMUNITY  
COLLEGE

NEW CARPARK  
EXTERNAL LIGHTING  
LAYOUT

SCALE: 1:100  
DATE: 01/7/24  
DRAWN BY: DMR

PRELIMINARY

HAWDEN  
ENGINEERING MEP SOLUTIONS

20014-HAW-00-GF-DR-E-5101 A 501